

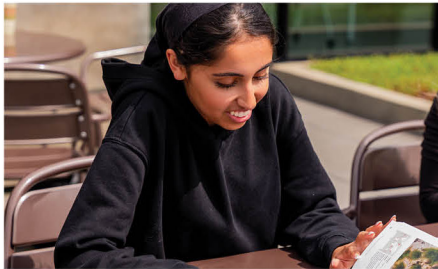
EMPOWERING LIVES THROUGH EDUCATION



Whatcom
COMMUNITY COLLEGE

Welcome

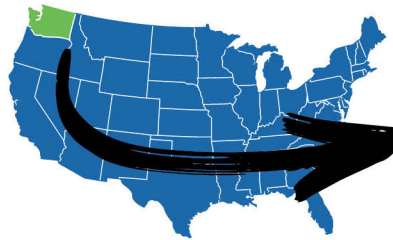
Located in Bellingham WA, **WHATCOM COMMUNITY COLLEGE** is an accredited college offering two-year associate's degrees and three four-year bachelor's degrees in business management, IT networking and social work. Our accomplished faculty and staff serve more than 7,000 students annually. Whatcom also offers transfer degrees, professional and technical training programs, basic education, job skills, and continuing & community education. An average of 4,000 students study at Whatcom each quarter, including more than 200 international students from over 20 countries. Whatcom offers one of the newest community college campuses in the U.S., including fourteen buildings with modern facilities to meet students' needs.



BELLINGHAM

A GREAT PLACE TO LIVE & STUDY

Known as a student friendly town, Bellingham, Washington has a population of 95,000. The city is positioned between the cities of Seattle (South) and Vancouver (North). Bellingham offers an enviable quality of life and a wide variety of cultural and recreational opportunities including skiing, snowboarding, mountain biking, kayaking, and an active arts community.



COLLEGE TOWN

... with more than 20,000 college students at Whatcom Community College, Western Washington University and Bellingham Technical College – Bellingham is well educated and student friendly.

SAFE

Bellingham has a low crime rate and is famous for being a safe and welcoming community.



UNIVERSITY

TRANSFER PROGRAM

Whatcom's most popular program is the university transfer program. The Associate in Arts and Sciences degree is designed for students who plan to transfer to a four-year university to complete their bachelor's degree. Whatcom's International Programs staff are experts on how to transfer to top universities through the U.S.



POPULAR TRANSFER MAJORS:

- Accounting / Business
- Architecture / Art
- Chemistry / Biology
- Communications
- Computer Science
- Psychology
- Engineering
- Finance
- Hospitality and Tourism
- Mathematics
- Physics
- ... and many more

WHATCOM INTERNATIONAL STUDENTS HAVE BEEN ACCEPTED AT:

- Arizona State University
- Georgia Institute of Technology
- Indiana University
- Ohio State University
- Oregon State University
- Pacific Lutheran University
- Penn State
- State University of New York at Buffalo
- University of British Columbia
- University of California, Berkeley
- University of California, Los Angeles (UCLA)

- University of California, San Diego
- University of Colorado
- University of Mass., Amherst
- University of Michigan
- University of Minnesota
- University of Nevada, Las Vegas
- University of Oregon
- University of Texas
- University of Washington
- University of Wisconsin
- Washington State University
- Western Washington University
- and many others



START YOUR UNIVERSITY DEGREE AT WHATCOM

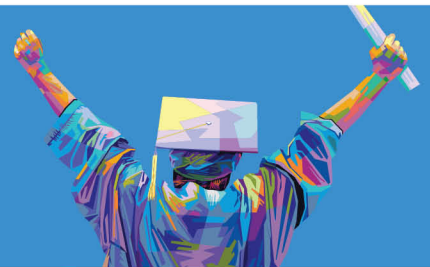
2 + 2 =

years at WCC

years at a university

BACHELOR'S DEGREE

for less \$\$





IHSC PROGRAM

The International High School Completion (IHSC) program allows international students who are motivated and prepared for college life to earn both a Washington state high school diploma *and* an associate's degree from WCC at the same time.

ADMISSIONS REQUIREMENTS

- Students must be at least 16 years old at the start of their studies
- Students must have completed at least 9th grade (or equivalent)
- Students must demonstrate high academic achievement in home country

HOUSING

CEDAR HALL (On-Campus)



- Fully furnished suites
- Private bedroom & shared kitchen/bath in each suite
- Live-in resident assistants on each floor to support students
- Live with American and international classmates
- Laundry facility and free WiFi

HOMESTAY



- Live with local hosts
- Coordinated by WCC

WHATCOM OFFERS TWO PATHWAYS TOWARDS MEETING YOUR ACADEMIC GOALS:

GOALS: Begin your studies online in your home country or on campus in the USA.

Admission Requirements

- Completed signed application form
- Original supporting financial documents (less than 6 months old) showing a minimum of \$26,664 USD (not required if studying online)
- \$50 USD application fee (non-refundable)
- Photocopy of high school and college transcripts
- Photocopy of passport
- Essay stating career and academic goals (optional and recommended)

English Language Proficiency Requirements

Proof of English language proficiency is not required for admission to Whatcom Community College. Whatcom Community College's English assessment will determine the number of academic classes a student can enroll in during their first quarter. Students who submit the following proficiency test scores will begin their studies in academic classes: **TOEFL 61 • IELTS 5.5 • Duolingo 90**

ESTIMATED COSTS TO STUDY AT WCC

EXPENSE	ACADEMIC YEAR (3 Quarters)
Tuition	\$11,808.00
Books/Supplies	\$600.00
Living Expenses	\$12,900
Health Insurance	\$1,356.00
Total	\$26,664.00 USD

* Tuition rate is based on 15 credits / quarter.

APPLICATION DEADLINES

	Winter 2026	Spring 2026	Summer 2026	Fall 2026
On-Campus	Nov 21	Feb 20	May 15	Aug 7
Online	Dec 5	Mar 6	May 29	Aug 21

Whatcom Community College does not discriminate on the basis of race, color, national origin, religion, sex, disability, honorably discharged veteran or military status, sexual orientation, gender identity, gender presentation, ancestry, ethnicity, family status, immigration status, socioeconomic status, genetic information or age in its programs and activities.